
SPECIFICATION FOR LCD MODULE

Customer : _____

Product Model: _____

Sample code: _____

Designed by	Checked by	Approved by

Final Approval by Customer

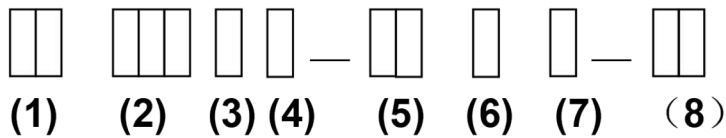
<input type="checkbox"/> LCM Machinery OK Checked By _____ <input type="checkbox"/> LCM Display OK Checked By _____	<input type="checkbox"/> LCM OK <input type="checkbox"/> NG, Problem survey: Approved By _____
--	--

[illegible]

Contents

No.	Item	Page
1.	Numbering System	4/26
2	Scope	5/26
3	Normative Reference	5/26
4	Definitions	5/26
5	Technology Specifications	7/26
6	Circuit block diagram	12/26
7	Write/ReadSPI Timing	16/26
8	Reliability Test Condition and Methods	17/26
9	Inspection standard	18/26
10	Handling Precautions	24/26
11	Precaution for use	25/26
12	Dimensional Outline	26/26

1 Numbering System



No	Definition	Specifications
(1)	TFT LCM Productor No.	
(2)	Display monitor opposite angle line size	Unit :mm or mmm (size <10 inch: takes two integers ; size >=10 inch: takes three integers)
(3)	Productor Types	D ---- Digital photo frame / DVD G ----GPS M ----MP P ----Mobil-Phone o o o
(4)	Productor Development Series No.	By two figures characters expression from 01 to 99
(5)	Interface PIN Number	By two figures characters expression from 01 to 99
(6)	With Touch Panel Or Not	T----With T/P ; N----Without T/P
(7)	LCD Type	A----AUO ; M----CMO ; C----CPT; P----PVI; L----LG; W----Wintek; H----HSD; T----TM; Y----Hydis; I----Hitach; S----Sharp...
(8)	Productor Development edition No.	By The English litters : A 1~ Z9

2 Scope

This specification applies to the LCD module which is designed and manufactured

It is capable of using 262k colors mode 24bit parallel bi-directional interface.

3 Normative Reference

GB/T4619-1996 《Liquid Crystal Display Test Method》

GB/T2424 《Basic environmental Testing Procedures for Electric and Electronic Products.》

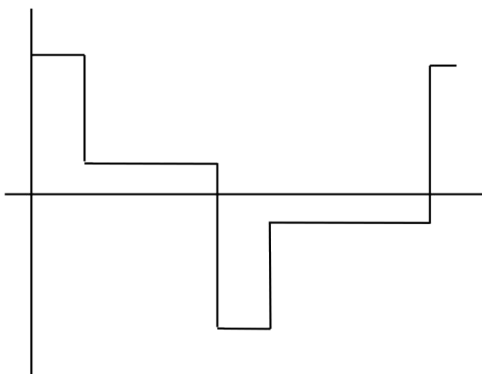
GB/T2423 《Basic Testing Procedures for Electric and Electronic Products》

IEC61747-1 《SIXTH PARTGB2828`2829-87 《National Standard of PRC》

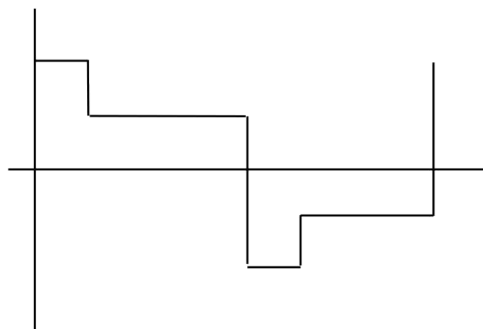
4 Definitions

4.1 Definitions of Vop

The definitions of threshold voltage V_{th1} , V_{th2} the following typical waveforms are applied on liquid crystal by the method of equalized voltage for each duty and bias.



【 selected waveform 】



【 non-selected waveform 】

① V_{th1} : The voltage which the brightness of segment indicates 50% of saturated value on the conditions of selected waveform
($f_r=80\text{Hz}$, $\Phi=10^\circ$ $\theta=270^\circ$ at 25°C)

② V_{th2} : The voltage which the brightness of segment indicates 50% of saturated value on the conditions of non-selected waveform
($f_r=80\text{Hz}$, $\Phi=10^\circ$ $\theta=270^\circ$ at 25°C)

③ V_{op} : $(V_{th1}(50\%)+V_{th2}(50\%))/2$ ($f_r=80\text{Hz}$, $\Phi=10^\circ$ $\theta=270^\circ$ at 25°C)

4.2 Definition of Response Time T_r , T_d

① T_r : The time required which the brightness of segment becomes 10% from 100% when waveform is switched to selected one from non-selected one. ($f_r=80\text{Hz}$, $\Phi=10^\circ$ $\theta=270^\circ$ at 25°C)

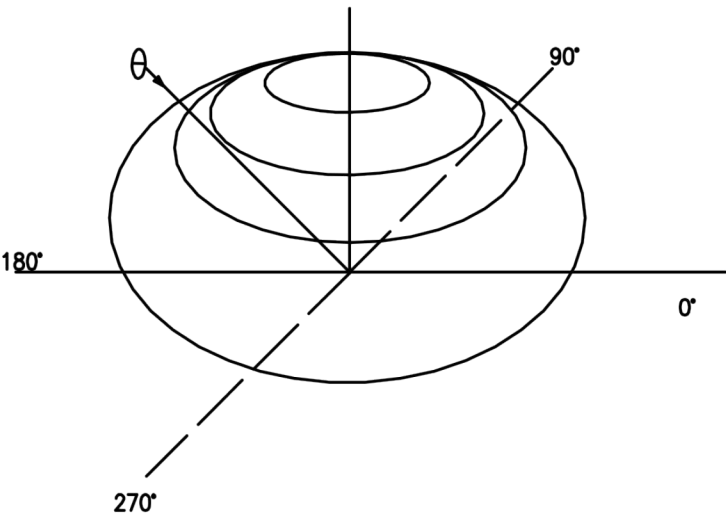
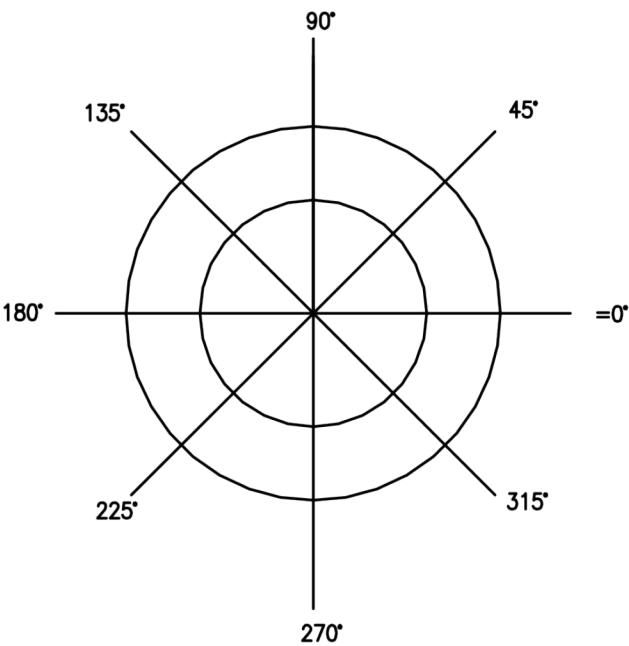
②Td: The time required which the brightness of segment becomes 90% from 10% when waveform is switched to selected one from selected one. ($f_r=80\text{Hz}$, $\Phi=10^\circ$ $\theta=270^\circ$ at 25°C)

4.3 Definition of Contrast Ratio Cr

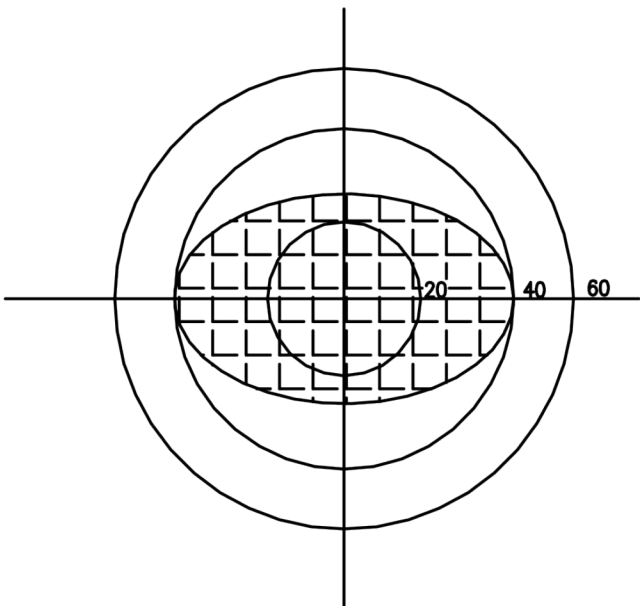
$Cr=A/B$

- ① A: Segments brightness in case of non-selected waveform
- ② B: Segments brightness in case of selected waveform

4.4 Definition of Angle and Viewing Range



Angular Graph: Constrast Ratio



Such as:
Viewing Angle Range:
80($Cr>2$) Horizontal
70($Cr>2$) Vertical

5 Technology Specifications

5.1 Feature

This single-display module is suitable for use in Multimedia Player products. The LCD adopts one backlight with High brightness 10-lamps white LED.

- 1) Construction: 4.3" a-Si color TFT-LCD ,White LED backlight and FPC.
- 2) LCD:
 - 2.1 Amorphous-TFT 4.3-inch display, transmissive, normally white type.
 - 2.2 480(RGB)×272 dots Matrix.
 - 2.3 Narrow-contact ledge technique.
 - 2.4 LCD Driver IC: OTA5180A× 1.
- 3) Low cross talk by frame rate modulation.
- 4) 262K Color ,24bit RGB interface.
- 5) Video signal interface: Parallel RGB .

5.2 Mechanical Specifications

Item	Specifications	Unit
Dimensional outline	105.6(W) ×67.3(H)×2.85(T)	mm
Luminance for LCD	300	cd/m ²
VA	98.48(W) x 57.09(H)	mm
Active area	95.04(W) ×53.86 (H)	mm
Pixel size	198(W) ×198(H)	um
Resolution	480(RGB) × 272	pixel

5.3 Absolute Max. Rating

Absolute Maximum Ratings

Rating	Symbol	Value		Unit
Digital supply voltage	VDDIO	-0.3	to +4.5	V
Power Supply for Pump	VDD	-0.3	to +4.5	V
Analog supply voltage	VDD2	-0.3	to +7.0	V
Storage temperature	T _{STG}	-55	to 100	°C
Operating temperature	T _A	-30	to 85	°C

Note: Stresses beyond those given in the Absolute Maximum Rating table may cause operational errors or damage to the device. For normal operational conditions see AC/DC Electrical Characteristics.

Recommended Operating Range

Item	Symbol	Min.	Typ.	Max.	Unit	Conditions
Charge Pump Supply Voltage	PVDD	3	3.3	3.6	V	PWR_SEL=H
	PVDD	2.25	2.5	3	V	PWR_SEL=L
Digital Supply Voltage	VDD	3	3.3	3.6	V	PWR_SEL=H
	VDD	2.25	2.5	3	V	PWR_SEL=L
Digital Interface Supply Voltage	VDDIO	1.65	1.8	VDD	V	
Digital Input Voltage	Din	0	-	VDDIO	V	
OTP Supply Voltage	V_OTP	7.4	7.5	7.6	V	
VCOM AC Voltage	VCOMH- VCOML	3.46	-	6.2	V	

DC Characteristics for Digital Circuit

VDDIO=1.8V, VDD = 3.3V, AVDD = 6V, AGND = 0V, T_A = -20°C to 80°C

Item	Symbol	Min.	Typ.	Max.	Unit	Conditions
Low Level Input Voltage	Vil	GND	-	0.3xVDDIO	V	
High Level Input Voltage	Vih	0.7xVDDIO	-	VDDIO	uA	
High Level Output Voltage	Voh	VDDIO-0.4	-	VDDIO	ohm	
Low Level Output Voltage	Vol	GND	-	GND+0.4	uA	
Input Leakage Current	Iil			±1.0		
Pull High/Low Resistor	Rp	-	100K	-	ohm	
Digital Stand-by Current	Ist		5.0	20	uA	DCLK stopped, Output Hi-Z
Digital Operating Current	Icc	-	4	-	mA	DCLK = 9MHz

5.4 Electrical Characteristics

VDDIO=1.8V, VDD = 3.3V, AVDD = 6V, AGND = 0V, T_A = -20°C to 80°C

Item	Symbol	Min.	Typ.	Max.	Unit	Conditions
Analog Supply Voltage	VDD2		5		V	
Positive High-voltage power	VGH	9	15	16	V	No Load. By VGH_SEL setting.
Negative High-voltage power	VGL	-11	-10	-7	V	No Load. By VGL_SEL setting.
VCOMH Output Level	VCOMH	3.26		5.8	V	By VCOMH setting.
VCOML Output Level	VCOML	-2		-0.2	V	By VCOML setting
DRV Output Voltage	VDRV	0	-	VDD	V	
DCDC Feed Back Voltage	VFB	0.28	0.6	0.79	V	By LED_VFB setting
Base Drive Current	IDRV	-	20	25	mA	By LED_VFB setting
Output Voltage Deviation	Vod	-	±20	±35	mV	V _O = 0.15V ~ 0.5V, 3.45V~3.8V
		-	±15	±20		V _O = 0.5V ~ 3.45V
Output Dynamic Range	Vdr	0.2	-	5.3		MVA Mode
		0.15		4.8		TN Mode
VCOM Low Level Output Current	IOL _{FRP}		-10		mA	VCOM AC output = 0.5V
VCOM High Level Output Current	IOH _{FRP}		-10		mA	VCOM AC output = 5.7V
Analog Standby Current	I _{last}	-	-	20	uA	
Analog Operation Current	IDD	-	5.0	-	mA	Without panel loading

AC Characteristics

VDDIO=1.8V, VDD = 3.3V, AVDD = 6V, AGND = 0V, T_A = -20℃ to 80℃

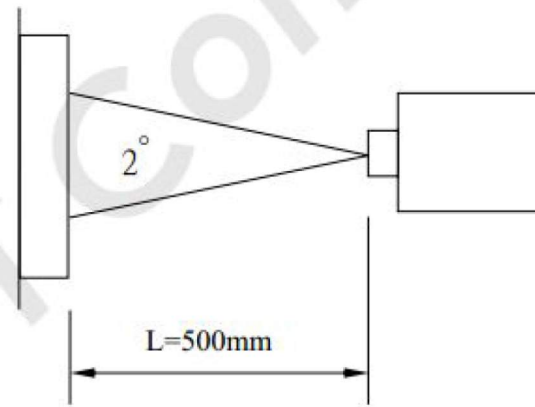
Item	Symbol	Min.	Typ.	Max.	Unit	Conditions
CLK pulse duty	Tcw	40	50	60	%	
Hsync width	Thw	1.0	-	-	DCLK	
Hsync period	Th	55	60	65	us	
Vsync setup time	Tvst	12	-	-	ns	
Vsync hold time	Tvhd	12	-	-	ns	
Hsync setup time	Thst	12	-	-	ns	
Hsync hold time	Thhd	12	-	-	ns	
Data set-up time	Tdsu	12	-	-	ns	
Data hold time	Tdhd	12	-	-	ns	
DE set-up time	Tdesu	12	-	-	ns	
DE hold time	Tdehd	12	-	-	ns	
SD output stable time	Tst	-	10	12	us	
GD output rise and fall time	Tgst	-	500	1000	ns	
Serial communication						
Delay between CSB and Vsync	Tcv	1			us	
CS input setup time	Ts0	50			ns	
Serial data input setup time	Ts1	50			ns	
CS input hold time	Th0	50			ns	
Serial data input hold time	Th1	50			ns	
SCL pulse high width	Twh1	50			ns	
SCL pulse low width	Twl1	50			ns	
CS pulse high width	Tw2	400			ns	

5.5 Optical specifications

ITEM		SYMBOL	CONDITION	MIN.	TYP.	MAX.	UNIT	REMARK
Transmittance		T		5.6	5.9		%	Note 2
Contrast Ratio		CR	*1)	250	350	--	--	Note 3
Response Time		Tr+ Tf	*3)	-	30	45	ms	Note 4
Viewing Angle	Vertical	θ *2)	$CR \geq 10$	90	110	--		Note 5
						--		
	Horizontal	ϕ *2)		110	130	--		
						--		
Color Filter Chromaticity with C light	White	x y	$\theta = \phi = 0^\circ$	0.282	0.302	0.322		Note 6
				0.318	0.338	0.358		
	Red	x y	$\theta = \phi = 0^\circ$	0.586	0.606	0.626		
				0.305	0.325	0.345		
	Green	x y	$\theta = \phi = 0^\circ$	0.283	0.303	0.323		
				0.547	0.567	0.587		
	Blue	x y	$\theta = \phi = 0^\circ$	0.127	0.147	0.167		
				0.121	0.161	0.181		
	NTSC			-	50%	-		

Note 1.Ambient condition : 25℃±2℃ , 60±10%RH , under 10 Lux in the darkroom .

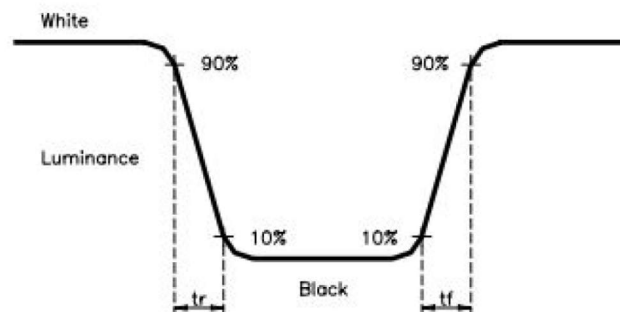
Note 2.Measure device : BM-5A (TOPCON) , viewing cone=2° , I_L=20mA .



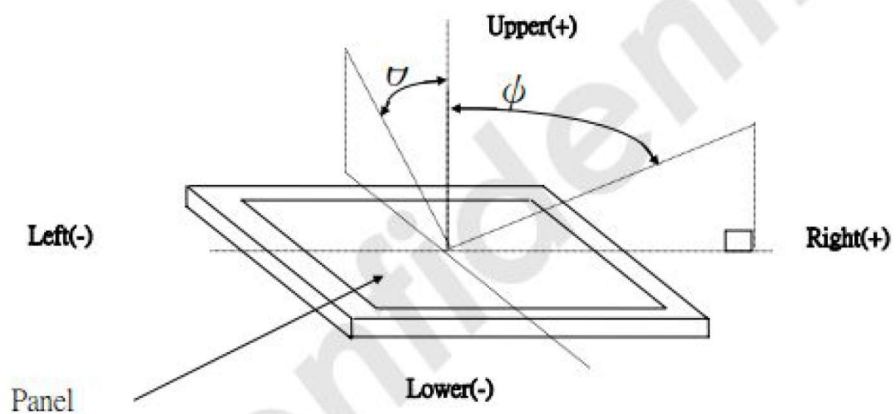
Note 3. Definition of Contrast Ratio :

$$\text{CR} = \text{White Luminance (ON)} / \text{Black Luminance (OFF)}$$

Note 4. Definition of response time : The response time is defined as the time interval between the 10% and 90% amplitudes.



Note 5. Definition of view angle(θ , ψ) :

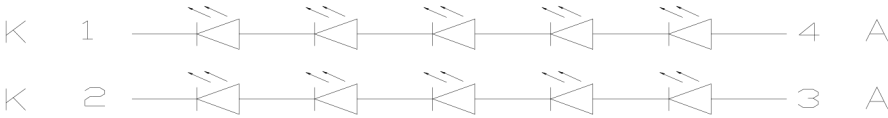


Note 6. Light source: C light.

5.6 LED back light specification (7 White Chips)

Item	Symb ol	Condition	Min	Typ	Max	Unit
Forward Voltage	V _f	I _f =40mA	15	16	17	V
Uniformity (with L/G)	Δ B _p	I _f =40mA	80	-	-	%
Luminance for LCD	L _v	I _f =40mA	270	300	-	cd/m ²
LED Life Time	LBL	-	20000	-	-	Hrs
LED Forward Current	-	-	35	40	45	mA

LED CIRCUIT

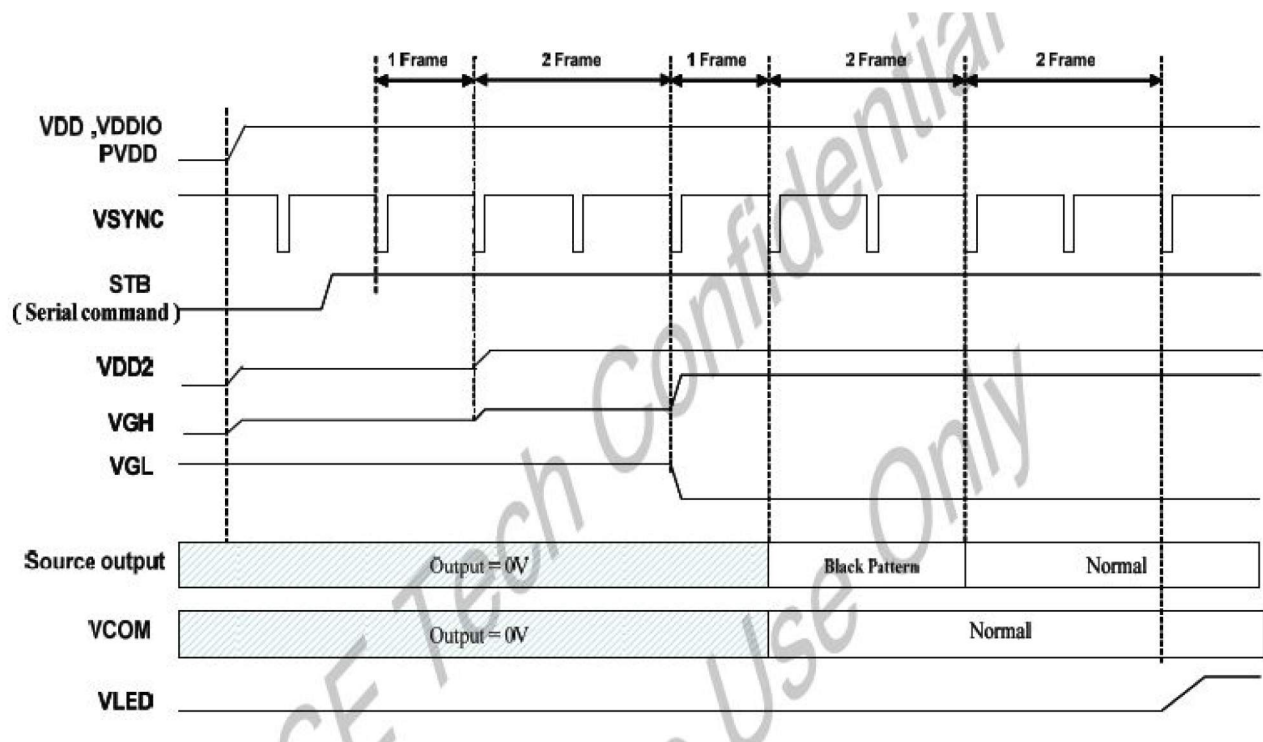


5.7 Interface Pin Connections

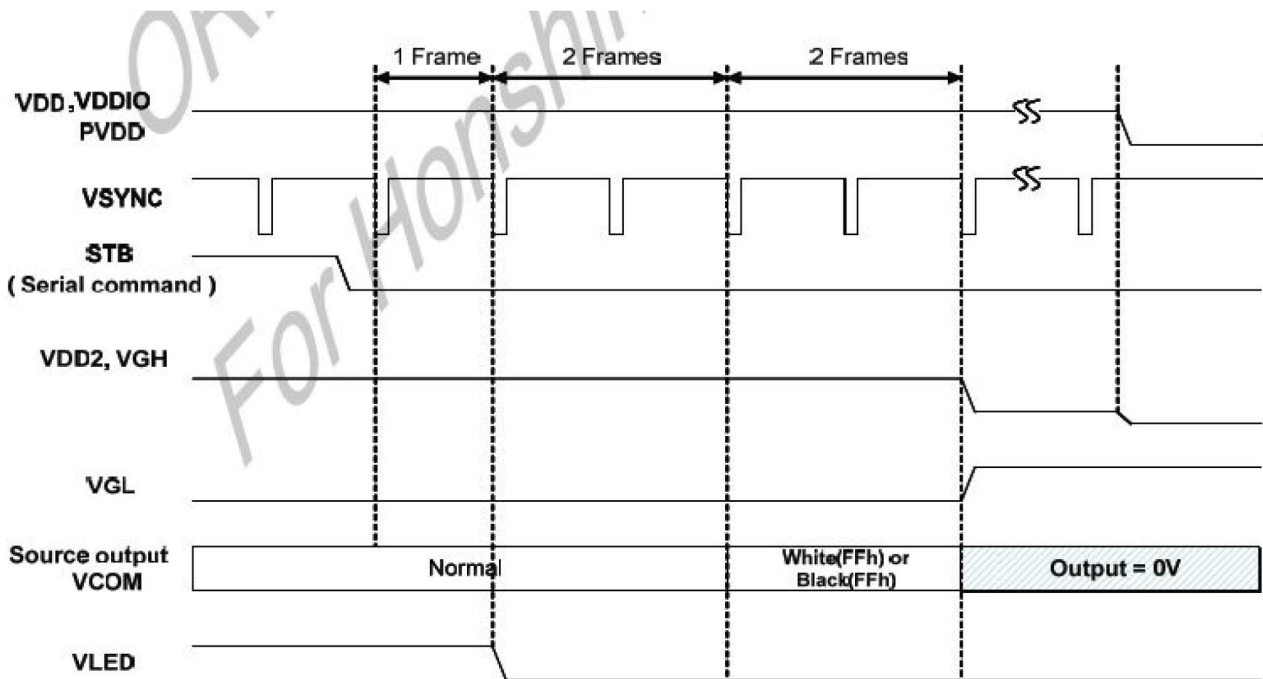
PIN NO.	Symbol	Description
1	LED-K	LED backlight(Cathode)
2	LED-A	LED backlight(anode)
3	GND	Ground
4	VCC	Power supply (Digital +3.0V)
5-12	R0-R7	Red Data
13-20	G0-G7	Green Data
21-28	B0-B7	Blue Data
29	GND	Ground
30	CLK	Clock signal
31	DISP	Display on/off
32	HSYNC	Horizontal sync input in RGB mode (short to GND if not used)
33	VSYNC	Vertical sync input in RGB mode (short to GND if not used)
34	DEN	Data Enable
35	NC	NC
36	GND	Ground
37	NC	NC
38	NC	NC
39	NC	NC
40	NC	NC

6.2 Signal Timing Diagram

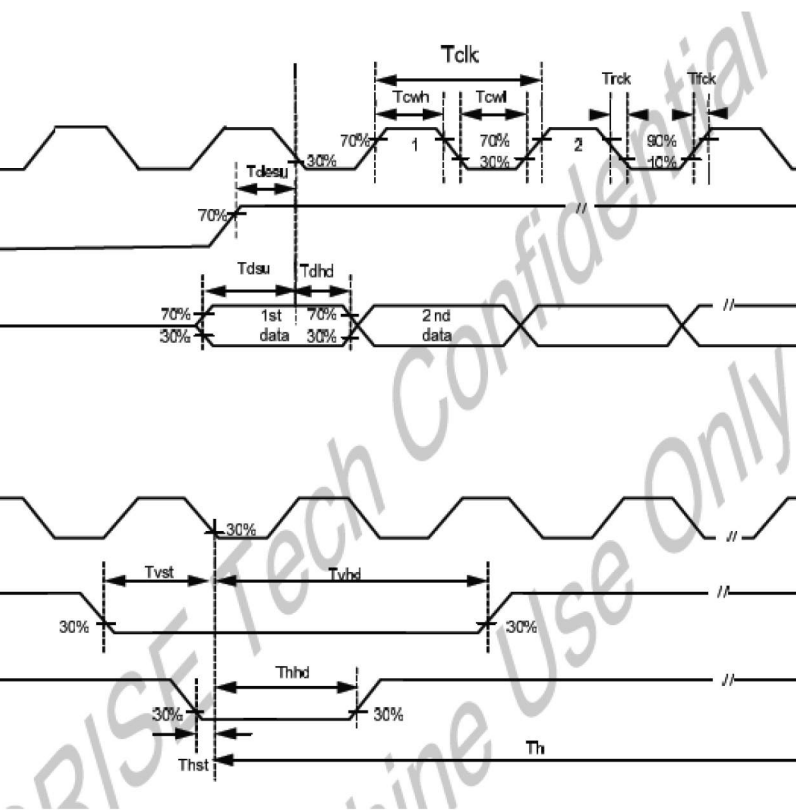
6.2.1 Power ON Sequence



6.2.2 Power OFF Sequence



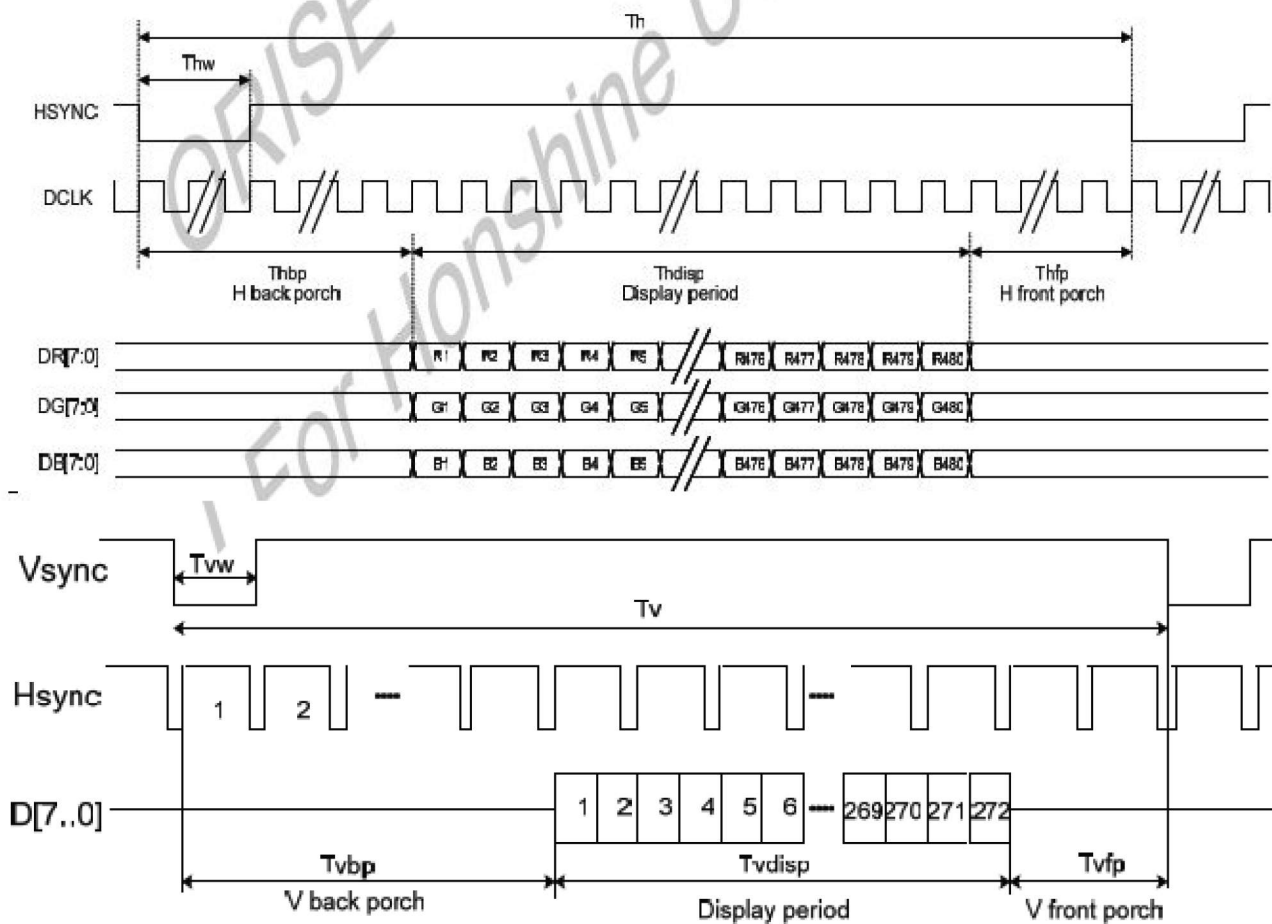
Clock and Data Input Timing Diagram



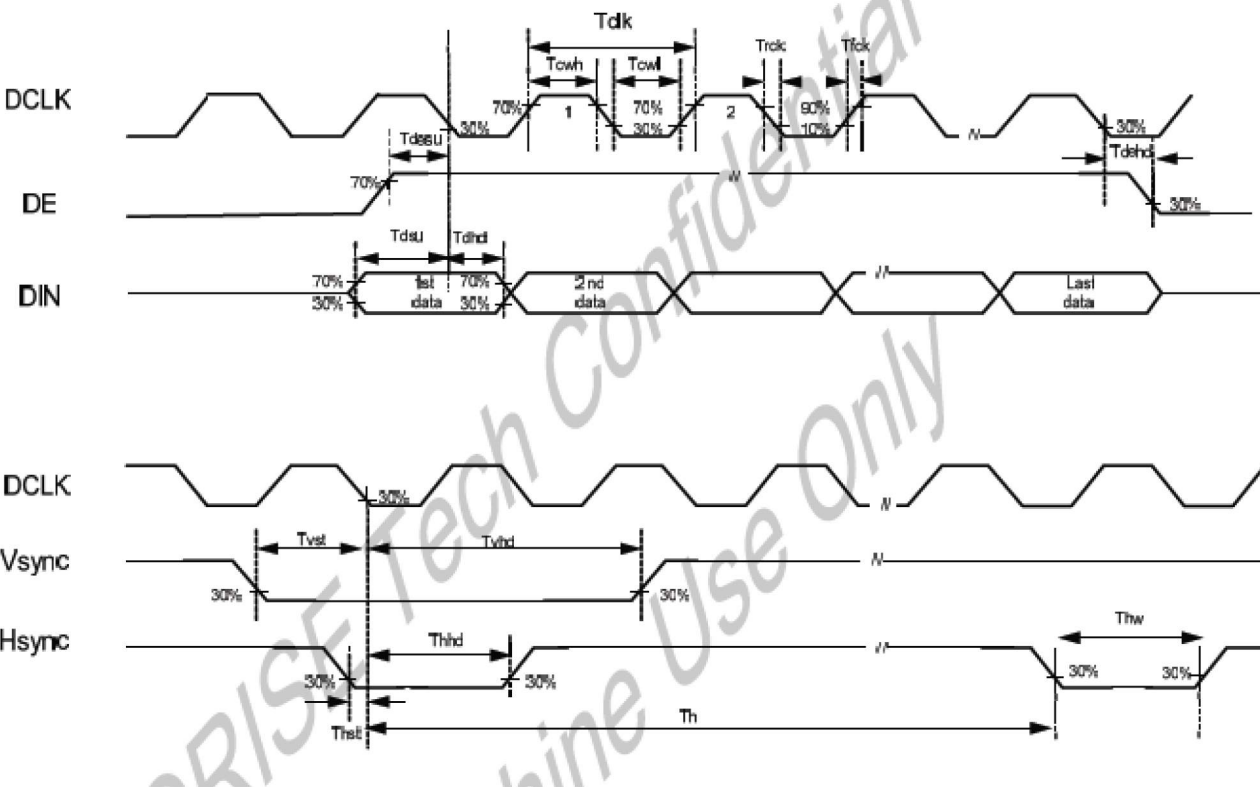
6.2.4 Input setup Timing requirement

Item		Symbol	Min.	Typ.	Max.	Unit	
DCLK Frequency		Fclk	5	9	12	MHz	
DCLK Period		Tclk	83	110	200	ns	
Hsync	Period Time	Th	490	531	605	DCLK	
	Display Period	Thdisp		480		DCLK	
	Back Porch	Thbp	8	43		DCLK	By H_BLANKING setting
	Front Porch	Thfp	2	8		DCLK	
	Pulse Width	Thw	1			DCLK	
Vsync	Period Time	Tv	275	288	335	H	
	Display Period	Tvdisp		272		H	
	Back Porch	Tvbp	2	12		H	By V_BLANKING setting
	Front Porch	Tvfp	1	4		H	
	Pulse Width	Tvw	1	10		H	

9.1.2 SYNC Mode Timing Diagram



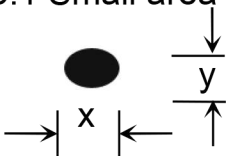
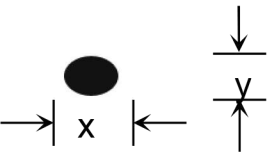
7 Write/ReadSPI Timing

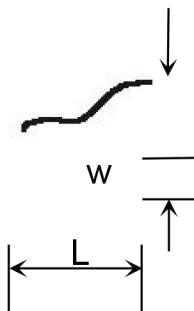
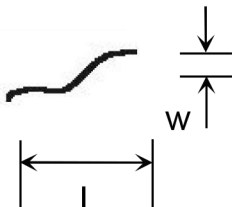


8.Reliability Test Conditions And Methods

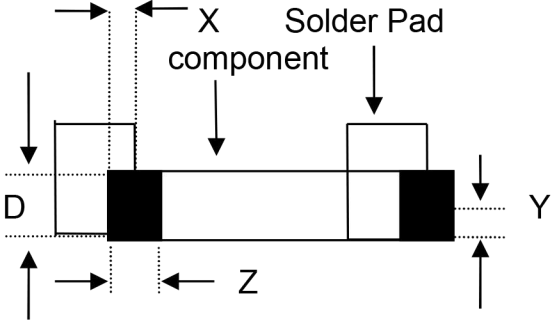
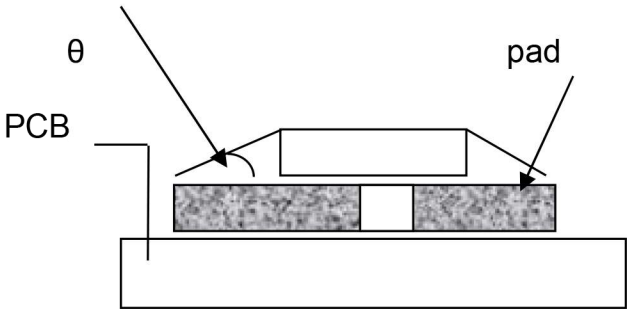
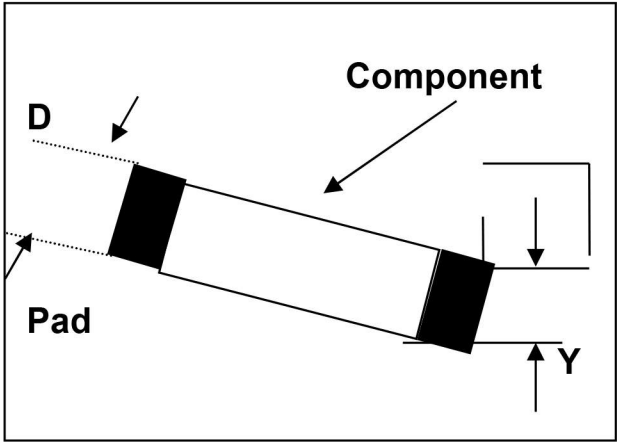
NO	Item	Condition	Method
1	High / Low Temperature Storage	80℃/-30℃ 120hrs	Check and record every 48Hrs
2	High / Low Temperature Life	70℃/-20℃ 120hrs (operating mode)	Check and record every 48Hrs
3	High Temperature、High Humidity Operating	60℃,90% RH, 96Hrs	Check and record every 48hrs
4	Thermal Shock	-30℃(30Min) → 25℃(5Min) → 80℃(30Min) (conversion time, : 5 sec) 20 cycles	Each 10 cycles end , check
5	Vibration	10Hz~55Hz~10Hz Amplitude: 1.5mm 2hrs for each direction(X,Y,Z)	Each direction end, Check the Appearance and Electrical Characteristics
6	Static Electricity	Gap mood: ±1KV~±8KV (10 times air discharge with positive/negative voltage voltage gap : 1kv) Touch mood: ±1KV~±4KV	Each discharge end, Check the Electrical Characteristics
7	Curve	60 Thousand times, 40 times/min 150° (according to die if exist)	Check and record every 2~4 thousand times
8	Slump	Free faller movement for each side、cording、angle (75cm High、 6 sides、 2 angle、 2 cording)	End

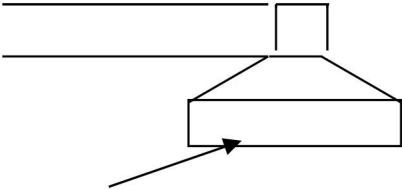
9. Inspection standard

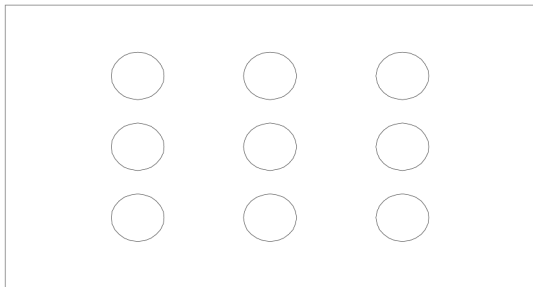
No	Item	Criterion											
01	Outline Dimension	In accord with drawing											
02	Position-finding Dimension Assemble Dimension	In accord with drawing											
03	LCD black spots, white spots (Round type)	Round type: non display 3.1 Small area LCD  <div>Unit : mm</div> <table><tr><th>Dimension</th><th>Qualified Quantity</th></tr><tr><td>$D \leq 0.1$</td><td>Ignore</td></tr><tr><td>$0.1 < D \leq 0.15$</td><td>2</td></tr><tr><td>$D > 0.15$</td><td>0</td></tr></table>	Dimension	Qualified Quantity	$D \leq 0.1$	Ignore	$0.1 < D \leq 0.15$	2	$D > 0.15$	0			
		Dimension	Qualified Quantity										
$D \leq 0.1$	Ignore												
$0.1 < D \leq 0.15$	2												
$D > 0.15$	0												
		3.2 Large area LCD  <table><tr><th>Dimension</th><th>Qualified Quantity</th></tr><tr><td>$D \leq 0.1$</td><td>Ignore</td></tr><tr><td>$0.1 < D \leq 0.15$</td><td>2</td></tr><tr><td>$0.15 < D \leq 0.20$</td><td>1</td></tr><tr><td>$D > 0.20$</td><td>0</td></tr></table> C-STN : if $D > 0.1$, unqualified	Dimension	Qualified Quantity	$D \leq 0.1$	Ignore	$0.1 < D \leq 0.15$	2	$0.15 < D \leq 0.20$	1	$D > 0.20$	0	
Dimension	Qualified Quantity												
$D \leq 0.1$	Ignore												
$0.1 < D \leq 0.15$	2												
$0.15 < D \leq 0.20$	1												
$D > 0.20$	0												

04	LCD black spots, white spots (Line Style)	4.1 Small area LCD																		
		Unit : mm																		
			<table><tr><th>Length</th><th>Width</th><th>Qualified Quantity</th></tr><tr><td>-</td><td>≤0.015</td><td>Ignore</td></tr><tr><td>≤1.0</td><td rowspan="2">0.015<W≤0.025</td><td>2</td></tr><tr><td>≤2.0</td><td>1</td></tr><tr><td>≤1.0</td><td>0.025<W≤0.05</td><td>1</td></tr><tr><td>-</td><td>D>0.05</td><td>According to circle</td></tr></table>	Length	Width	Qualified Quantity	-	≤0.015	Ignore	≤1.0	0.015<W≤0.025	2	≤2.0	1	≤1.0	0.025<W≤0.05	1	-	D>0.05	According to circle
Length	Width	Qualified Quantity																		
-	≤0.015	Ignore																		
≤1.0	0.015<W≤0.025	2																		
≤2.0		1																		
≤1.0	0.025<W≤0.05	1																		
-	D>0.05	According to circle																		
		4.2Large area LCD																		
			<table><tr><th>Length</th><th>Width</th><th>Qualified Quantity</th></tr><tr><td>-</td><td>≤0.015</td><td>Ignore</td></tr><tr><td>≤2.0</td><td>0.015<W≤0.025</td><td>2</td></tr><tr><td>≤1.0</td><td>0.025<W≤0.05</td><td>1</td></tr><tr><td>-</td><td>D>0.05</td><td>According to circle</td></tr></table>	Length	Width	Qualified Quantity	-	≤0.015	Ignore	≤2.0	0.015<W≤0.025	2	≤1.0	0.025<W≤0.05	1	-	D>0.05	According to circle		
Length	Width	Qualified Quantity																		
-	≤0.015	Ignore																		
≤2.0	0.015<W≤0.025	2																		
≤1.0	0.025<W≤0.05	1																		
-	D>0.05	According to circle																		
		CSTN : If W ≥ 0.015 , unqualified Ignore beyond viewing area																		
05	LCD Scratch 、 Threadlike Fiber	Same to NO.3 circle sightline and surface of LCD is vertical (2)Same to NO.3 line style																		
06	POL	It is not admissible that POL is beyond the edge of glass, else, unqualified. It is essential that POL is over the 50 percent of width of frame , else ,unqualified. According to the drawing in case of special definition.																		
07	IC/FPC Bonding	Scratch	Reject																	

		Intensity Of Adhesion	If lower than specification, reject	
		Gold Fold Twist	Reject	
07	IC/FPC Bonding	Silicon	According to outline, no gold outside, seal can not be higher than LCD	
		FPC Gold Sever	Reject	
08	SMT	Lack of Component, Polarity Inverse	If exist, reject	
		Leak Solder, Virtual Solder	If exist, reject	
		Short Circuit In Solder Point	If exist, reject	
		Tin Ball	If exist, reject	
		Tin Acumination	If visual, reject	
		Height Solder Point	If higher 0.5mm than component. reject	
		Height of component	Either side higher 0.5mm than component, reject	

		Component Shift	 <p> $X < 3/4Z$ $y > 1/3D$ </p> <p>reject reject</p>	
08	SMT	Few Tin	 <p>If $\theta \leq 20^\circ$ reject</p>	
		Component Deflection	 <p>If $Y > 1/3D$ reject</p>	
		Component Carcass Sideways	Reject	

		Component Carcass Sideways	If exist with visual inspection , reject	
		Lot Tin	A: Tin accrete the solder side completely , hollowly ,Ok B: Tin accrete the solder side completely , full circle arc , ok C: Jointing include whole solder side, height of tin>50 percent of height of component, reject	
		Few Tin	A: Tin accrete the solder side completely , hollowly ,Ok B: height of tin > 1/3 of solder side of component , ok C: height of tin ≤ 1/3 of solder side of component, reject	
08	SMT	<p>Normal</p>  <p>Jointing side</p>		
09	Light	Short circuit 、 Open circuit	Forbid	
		Quality of CSTN Display	1、 Rolling strake with visual inspection, forbid 2、 Differentness of color in viewing area with visual inspection (full white、 red、 green blue), forbid 3 、 Display change with visual inspection , forbid	

10	Color Of CIE Coordinate		x	y	Drive LCD under normal condition, 25℃ Φ=0 Θ=0 Test white、red、green blue with DMS Record	
		white	±0.05	±0.05		
		Red	±0.05	±0.05		
		Green	±0.05	±0.05		
		Blue	±0.05	±0.05		
		According to the specification or sample customer have approved				
11	Brightness	In accord with product specification	Drive condition is according to specification Measure location is in Follow Picture 3、Adjust brightness instrument to zero , burrow against the surface of LCD , press “measure” , record when the display is steady. (YOKOGAWA-3298)			
			<div></div> <p>Measure location</p>			
12	CR (Max)	According to specification	According to product specification Measure instrument (DMS-501)			
13	Response time	According to specification	According to product specification Measure instrument (DMS-501)			
14	Viewing angle	According to specification	According to product specification Measure instrument (DMS-501)			
15	Vibration、Ring	Compare with the sample customer supply	Compare with the sample customer supply when assemble			
16	Frequency Of FPC Bend	According to the use of product (main FPC of foldaway cell phone ≥6 thousand)	Measure instrument Bend angle : 150° Fix FPC in the casement when customer supply			

10. Handling Precautions

10.1 Mounting method

The LCD panel of Daxian LCD module consists of two thin glass plates with polarizers which easily be damaged. And since the module is so constructed as to be fixed by utilizing fitting holes in the printed circuit board.

Extreme care should be needed when handling the LCD modules.

10.2 Caution of LCD handling and cleaning

When cleaning the display surface, Use soft cloth with solvent [recommended below] and wipe lightly

- Isopropyl alcohol
- Ethyl alcohol

Do not wipe the display surface with dry or hard materials that will damage the polarizer surface.

Do not use the following solvent:

- Water
- Aromatics

Do not wipe ITO pad area with the dry or hard materials that will damage the ITO patterns

Do not use the following solvent on the pad or prevent it from being contaminated:

- Soldering flux
- Chlorine (Cl), Sulfur (S)

If goods were sent without being silicon coated on the pad, ITO patterns could be damaged due to the corrosion as time goes on.

If ITO corrosion happens by miss-handling or using some materials such as Chlorine (Cl), Sulfur (S) from customer, Responsibility is on customer.

10.3 Caution against static charge

The LCD module uses C-MOS LSI drivers, so we recommend that you:

Connect any unused input terminal to V_{dd} or V_{ss}, do not input any signals before power is turned on, and ground your body, work/assembly areas, assembly equipment to protect against static electricity.

10.4 packing

- Module employs LCD elements and must be treated as such.
- Avoid intense shock and falls from a height.
- To prevent modules from degradation, do not operate or store them exposed direct to sunshine or high temperature/humidity

11.5 Caution for operation

- It is an indispensable condition to drive LCD's within the specified voltage limit since the higher voltage than the limit causes the shorter LCD life.
- An electrochemical reaction due to direct current causes LCD's undesirable deterioration, so that the use of direct current drive should be avoided.
- Response time will be extremely delayed at lower temperature than the operating temperature range and on the other hand at higher temperature LCD's show dark color in them. However those phenomena do not mean malfunction or out of order with LCD's, which will come back in the specified

operation temperature.

- If the display area is pushed hard during operation, some font will be abnormally displayed but it resumes normal condition after turning off once.
- A slight dew depositing on terminals is a cause for electro-chemical reaction resulting in terminal open circuit.

Usage under the maximum operating temperature, 50%Rh or less is required.

10.6 storage

In the case of storing for a long period of time for instance, for years for the purpose or replacement use, the following ways are recommended.

- Storage in a polyethylene bag with the opening sealed so as not to enter fresh air outside in it . And with no desiccant.
- Placing in a dark place where neither exposure to direct sunlight nor light's keeping the storage temperature range.
- Storing with no touch on polarizer surface by the anything else.

[It is recommended to store them as they have been contained in the inner container at the time of delivery from us

10.7 Safety

- It is recommendable to crash damaged or unnecessary LCD's into pieces and wash off liquid crystal by either of solvents such as acetone and ethanol, which should be burned up later.
- When any liquid leaked out of a damaged glass cell comes in contact with your hands, please wash it off well with soap and water

11 Precaution for use

11.1

A limit sample should be provided by the both parties on an occasion when the both parties agreed its necessity. Judgment by a limit sample shall take effect after the limit sample has been established and confirmed by the both parties.

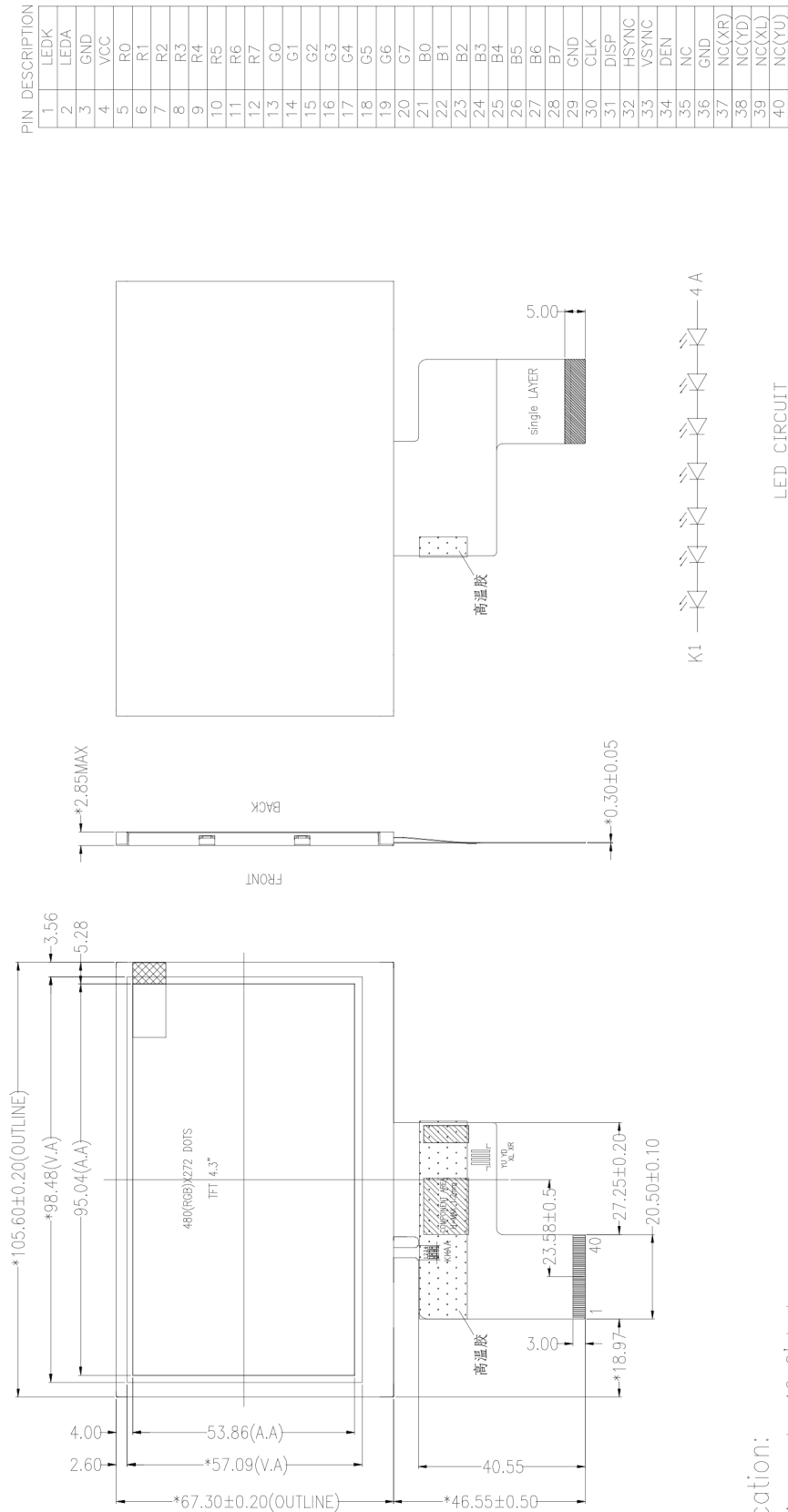
11.2

On the following occasions, the handing of problem should be decided through discussion and agreement between responsible of the both parties.

- When a question is arisen in this specification
- When a new problem is arisen which is not specified in this specifications
- When an inspection specifications change or operating condition change in customer is reported to Daxian , and some problem is arisen in this specification due to the change
- When a new problem is arisen at the customer's operating set for sample evaluation in the customer site.

12 Dimensional Outline

REV	版本	DESCRIPTION	描述	DATE	日期
A00		First	issue	2012-10-27	



Specification:

- 1). Viewing angle: 12.0°clock
- 2). Display mode: a_Si TFT/Transmissive/Normal White
- 3). Operating temp.: -20°C~+70°C
Storage temp.: -30°C~+80°C
- 4). IC: OTA5180A
- 5). Luminance(cd/m2): 270(min) 300(typ)
- 6). Dimensions with mark "*" are important, with mark "()" are referenced