



*3.5"-10.1" LCM&TFT Module manufacturer*

Email: [szmex.tft@mail.com](mailto:szmex.tft@mail.com) | [melody.hsia@sat-sz.com](mailto:melody.hsia@sat-sz.com)

Tel.:0086 769 22980021 Fax:0086 769 22985588

[www.sat-sz.com](http://www.sat-sz.com)

# SPECIFICATION SHEET

## 10.1" STANDARD TFT LCD MODULE

- Model No.:SAT-706-BZ101D-PO-N
- System: PAL/NTSC Automatic



**3.5"-10.1" LCM&TFT Module manufacturer**

Email: [szmex.tft@mail.com](mailto:szmex.tft@mail.com) | [melody.hsia@sat-sz.com](mailto:melody.hsia@sat-sz.com)

Tel.:0086 769 22980021 Fax:0086 769 22985588

[www.sat-sz.com](http://www.sat-sz.com)

## 1. INTRODUCTION

SAT-706-BZ101D-PO-N TFT module is combined with SAT-706-070-50DS-B2 and SAT101BO50DHY0-B0 digital panel; support both PAL system and NTSC, which can be automatically converted. The whole module use high light white LED as backlight, which has low consumption and disturbances. This TFT module can be used for visual doorbell, video telephony, automotive displays, portable DVD, instruments, meters and measuring equipments etc.

## 2. MAIN PARAMETERS

Resolution	1024(H)*600(V)
Valid display area	222.72(W)*125.28(H)(mm)
Color style	R.G.B. Beeline array
Aspect ratio	16:9
Backlight source	LED backlight

Working voltage	DC9-18V (standard : DC12V)
Working current (DC12V)	DC250mA±20mA
Input signal system	PAL/NTSC VIDEO (Automatic)
Scope of input signal	Standard: 1.0 Vp-p, Minimum:0.5 Vp-p ,Maximum:2.0 Vp-p
Startup time	≤ 1.5S
Power consumption	≤3.5W
Working temperature scope	-20℃~60℃
Storage temperature scope	-40℃-70℃



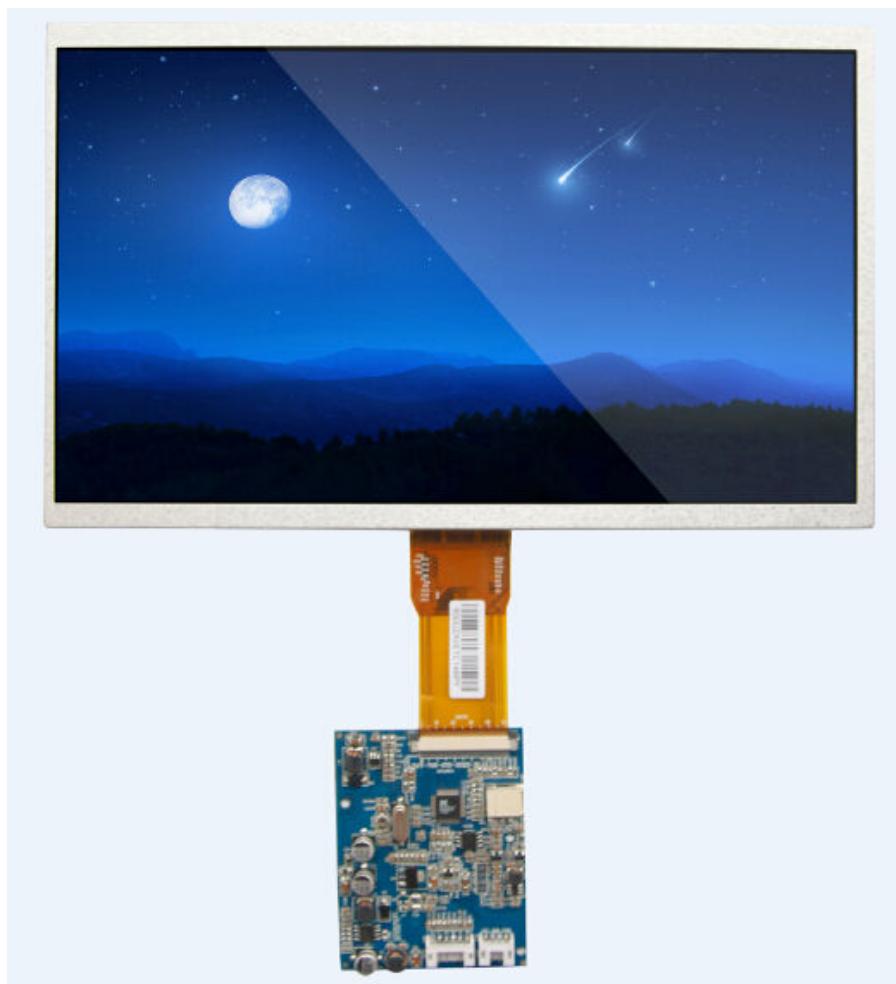
*3.5"-10.1" LCM&TFT Module manufacturer*

Email: [szmex.tft@mail.com](mailto:szmex.tft@mail.com) | [melody.hsia@sat-sz.com](mailto:melody.hsia@sat-sz.com)

Tel.:0086 769 22980021 Fax:0086 769 22985588

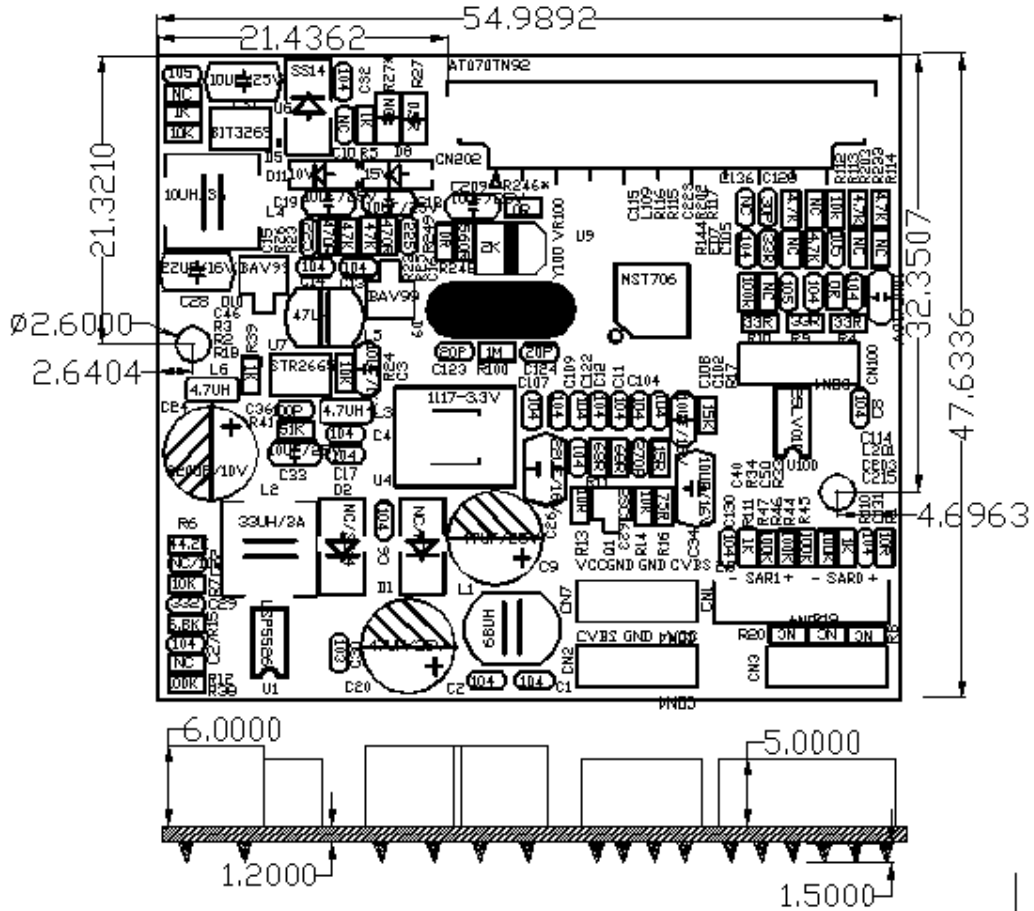
[www.sat-sz.com](http://www.sat-sz.com)

### **3. PRODUCT PICTURE (JUST FOR REFERENCE)**



### **4. DIAGRAM AND INTERFACE DEFINITION**

#### **4.1.DIAGRAM**



## 4.2. INTERFACE DEFINITION

CN4: 4-wire leads out (PH specifications, 2.0mm space between) for power and video.

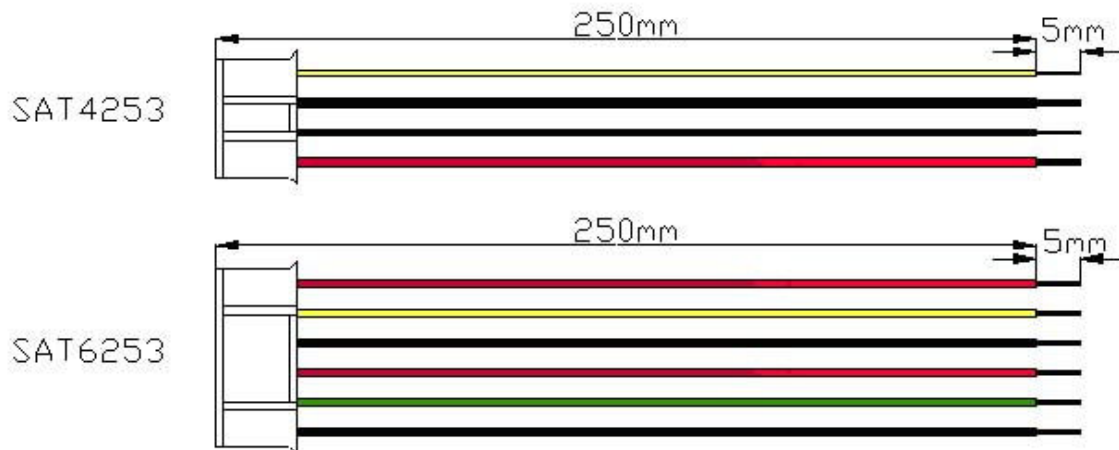
Pin	Symbol	Definitions
1	VCC	9V~18V Power Input
2	GND	Power ground
3	GND	Video ground
4	CVBS	PAL/NTSC VIDEO Input

CN1: 6-wire leads out (PH specifications, 2.0mm space between), used for potentiometer

Pin	Symbol	Definitions	Value of resistance
1	COL-	Chrominance VR (-)	10K—50K
2	COL	Chrominance VR	
3	COL+	Chrominance VR(+)	
4	BRT-	Brightness VR(-)	10K—50K
5	BRT	Brightness VR	
6	BRT+	Brightness VR(+)	

### 4.3. STANDARD WIRING

SAT-250-DZ-4P-200-26    SAT-250-DZ-6P-200-26





**3.5"-10.1" LCM&TFT Module manufacturer**

Email: [szmex.tft@mail.com](mailto:szmex.tft@mail.com) | [melody.hsia@sat-sz.com](mailto:melody.hsia@sat-sz.com)

Tel.:0086 769 22980021 Fax:0086 769 22985588

[www.sat-sz.com](http://www.sat-sz.com)

## **5. PACKING, TRANSPORT AND STORAGE**

### **5.1. PACKING**

Sample packing dimension: 180×120×30mm

Module wiring: (SAT-250-DZ-4P-200-26, SAT-250-DZ-6P-200-26 each 1pcs)

Carton quantity: no bracket 22pcs, each separated by paper card board.

### **5.2. TRANSPORT AND STORAGE**

☆ To avoid transport during rain or snow days. Prohibited to store with chemical materials and wet things.

## **6. ATTENTION**

☆The input voltage should not be higher than upper limit of designed voltage.

☆Distinguish power line and signal line; if connect reversely, the board can be burn out easily.

☆The board is electronic product, so static electricity should be precaution during process、assembling、operate.

☆Panel is glass product, should handle carefully in case of breakage.

☆The FPC line connects panel and PCB, it can be easily broken off or pull apart, so should be careful during process、assembling、operate.

☆When using, the signal resistance should be matched with the module internal resistance. Whether choosing 75ohm resistance or not is according to customer's requirement.

## **7. PANEL DECISION CRITERIA**

### **7.1. TESTING CONDITION**

**Test distance:** 35CM±5CM

**View angle:** Check when light on: ±5 degree;

Outlook checking: ±45 degree.



**3.5"-10.1" LCM&TFT Module manufacturer**

Email: [szmex.tft@mail.com](mailto:szmex.tft@mail.com) | [melody.hsia@sat-sz.com](mailto:melody.hsia@sat-sz.com)

Tel.:0086 769 22980021 Fax:0086 769 22985588

[www.sat-sz.com](http://www.sat-sz.com)

(from screen surface 0 degrees away in vertical)

## 7.2. CIRCUMTANCES

**Temp.:** 23±5 degree

**Humidity:** 55±10 degree

**Brightness:** Outlook check:600LUX; Lighting on: 300-500LUX

## 7.3. INSPECTION METHOD

**Scratch:** Inspect at 600LUX, from 30CM away, check in vertical

(or left/right 45 degree), if no any scratches, then qualified.

**Black dot:** Compare LCD black dot with Dot investigation standard by eyes.

**White/color dot:** Cover black dot investigation standard paper on the white dot or color dot, to check if the white/color dot is available.

## 7.4. INSPECTION STANDARD

Remark: 1. Diameter= (maximum +minimum)/2

2. Total quantity of Black dot, White dot, Color dot:

$$A+B\leq 4$$

DIAMETER (mm)		ALLOWED AREA	
		A area	B area
<b>Black dot</b>	$d \leq 0.2$	Neglect	Neglect
	$0.2 < d \leq 0.3$	4	4
	$0.3 < d \leq 0.5$	2	3
	$0.5d > 0.8$	0	2
<b>White dot</b>	$d \leq 0.2$	Neglect	Neglect
	$0.2 < d \leq 0.3$	3	3
	$0.3 < d \leq 0.5$	1	2
	$0.5d > 0.8$	0	1

### 7.5. DIVISION OF A/B AREA

